



# MAXNET®

## Chassis & Power Supplies Chassis

- Active 5RU chassis (required if using active modules but will also fit passive modules)
- Remote powered 5RU active chassis (required if using active modules but will also fit passive modules)
- Passive 5RU chassis, 18 positions (nine actives)
- 3RU horizontal passive chassis, 10 positions
- 1RU horizontal passive chassis, two positions



Patented  
U.S.# 6,842,348;  
Cdn.# 2,404,844

**5RU Standard RF Chassis**  
(front view)

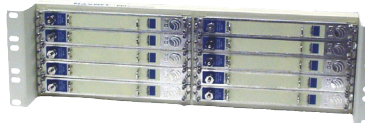
**D3.1/CCAP™  
Compliant**



**MN5BA Active Chassis**  
(front view)



**MN1 Passive Chassis**  
(front view)



**MN3 Passive Chassis**  
(front view)

**MN5BAR  
Remote Powered  
Active Chassis**  
(rear close-up view)

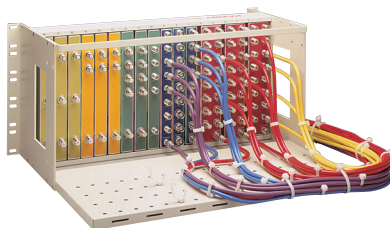


## Cable Management Options

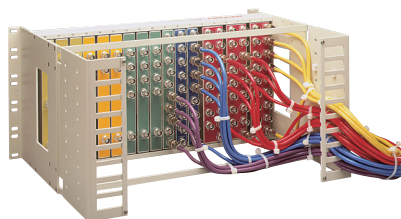
- Cable management bars (for all chassis)
- Cable management tray (front mount active and passive chassis)
- Cable management ears (front mount active and passive chassis)
- 1RU cable management tray (rear mount 5RU passive chassis)
- 23" rack mount extensions



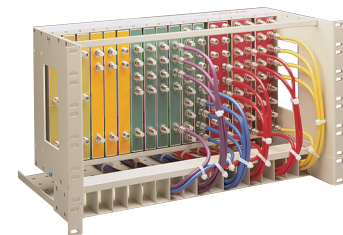
**MN1 Front Mount Chassis  
with Cable Management Bar**  
(rear view)



**MN5T Front Mount Chassis  
with Cable Management Tray**  
(rear view)



**MN5E Front Mount Chassis  
with Cable Management Ears**  
(rear view)



**MN5R Rear Mount Chassis pictured  
with but not including MN1RK, 1RU  
Cable Management Tray**  
(front view)

## Chassis & Cable Management Options

### Specifications

#### Chassis

PHYSICAL		
<b>MN1</b>	<b>DIMENSIONS</b>	1RU: 1.75"H x 19.0"W x 10.0"D (4.45H x 48.26W x 25.4D)
	<b>WEIGHT</b>	1.5 lbs (0.86 kg)
<b>MN1RK</b>	<b>DIMENSIONS</b>	1RU: 1.75"H x 19.0"W x 11.5"D (4.45H x 48.26W x 29.2D cm)
	<b>WEIGHT</b>	4.63 lbs (2.1 kg)
<b>MN3</b>	<b>DIMENSIONS</b>	3RU: 5.25"H x 19.0"W x 8.8"D (13.34H x 48.26W x 22.35D cm)
	<b>WEIGHT</b>	3.37 lbs (1.53 kg)
<b>MN5B</b>	<b>DIMENSIONS</b>	5RU: 8.75"H x 19.0"W x 8.5"D (22.23H x 48.26W x 21.59D cm)
	<b>WEIGHT</b>	7.9 lbs (3.6 kg)
<b>MN5E</b>	<b>DIMENSIONS</b>	5RU: 8.75"H x 19.0"W x 13.0"D (22.23H x 48.26W x 33.0D cm)
	<b>WEIGHT</b>	12.2 lbs (5.53 kg)
<b>MNEAR</b>	<b>DIMENSIONS</b>	8.5"H x 2.25"W x 6.8"D (21.6H x 5.7W x 17.27D cm)
	<b>WEIGHT</b>	3.85 lbs (1.75 kg)
<b>MN5R</b>	<b>DIMENSIONS</b>	5RU: 8.75"H x 19.0"W x 8.0"D (22.23H x 48.26W x 20.32D cm)
	<b>WEIGHT</b>	7.89 lbs (3.58 kg)
<b>MN5T</b>	<b>DIMENSIONS</b>	5RU: 8.75"H x 19.0"W x 14.5"D (22.23H x 48.26W x 36.83D cm)
	<b>WEIGHT</b>	10.47 lbs (4.75 kg)
<b>MN23EX</b>	<b>DIMENSIONS</b>	0.125"H x 8.75"W x 2.7"D (0.32H x 22.23W x 6.86D cm)
	<b>WEIGHT</b>	1.48 lbs (0.67 kg)
<b>MN5BA</b>	<b>DIMENSIONS</b>	5RU: 8.75"H x 19.0"W x 8.5"D (22.23H x 48.26W x 21.59D cm) (without cable management)
	<b>WEIGHT</b>	8.33 lbs (3.78 kg)
<b>MN5TA</b>	<b>DIMENSIONS</b>	5RU: 8.75"H x 19.0"W x 14.5"D (22.23H x 48.26W x 36.83D cm)
	<b>WEIGHT</b>	10.9 lbs (4.95 kg)
<b>MN5BEX</b>	<b>DIMENSIONS</b>	5RU: 8.75"H x 19"W x 13.5"D (22.23H x 48.26W x 34.29D cm)
	<b>WEIGHT</b>	7.67 lbs (3.48 kg)

### Ordering Information

Part Number	Description
<b>MN1</b>	1RU 19" Horizontal Chassis
<b>MN1RK</b>	1RU 19" Cable Management Kit (to be used with MN5R)
<b>MN3</b>	3RU 19" Horizontal Chassis
<b>MN5B</b>	5RU 19" Vertical Chassis with Two Cable Bars
<b>MN5E</b>	5RU 19" Vertical Chassis, Front Mount with Cable Management Ears
<b>MNEAR</b>	Cable Management Ears for MAXNET® Chassis
<b>MN5R</b>	5RU 19" Vertical Chassis, Rear Mount
<b>MN5T</b>	5RU 19" Vertical Chassis, Front Mount with Cable Management Tray
<b>MNTRAY</b>	Flat cable management tray and mounting clips for use with 5RU chassis.
<b>MN23EX</b>	23" Rack Mount Extensions
<b>MN5BA</b>	5RU 19" Vertical POWER/ACTIVE Chassis, Front Mount with Two Cable Bars
<b>MN5TA</b>	5RU 19" Vertical POWER/ACTIVE Chassis, Front Mount with Management Tray
<b>MN5BEX</b>	5RU 19" Vertical Chassis with Extended Cable Bars

MAXNET® is a registered trademark of ATX in the United States and/or other countries. Products or features contained herein may be covered by one or more U.S. or foreign patents. Other non-ATX product and company names mentioned in this data sheet are the property of their respective companies.

MAXNET specifications are only valid when ATX plug-in pads and EQs are used.

© 2020 by ATX Networks Corp. and its affiliates (collectively "ATX Networks Corp."). All rights reserved. This material may not be published, broadcast, rewritten, or redistributed. Information in this document is subject to change without notice.  
Rev. 2/2020 (ANW0592)



**ATX Networks**

Tel: 289.204.7800 | Toll-Free: 866.YOUR.ATX | support@atx.com