

MAXNET® II

Platinum Series

Chassis & Power Supplies Chassis

Passive Version

- Rugged 3RU design
- Can accommodate up to 24 single-width passive modules (4, 6, 8, dual 4-way, triple 2-way splitter/combiners and/or DCs and triple DCs) or 12 dual-width modules (16-way splitter/combiners)
- Variety of cable management options (see illustrations)
- Modules push and lock into chassis; no mounting hardware necessary
- Easily upgradeable to active chassis

Passive Version

- Rugged 1RU design
- Can accommodate up to six single-width passive modules (4, 6, 8, dual 4-way, triple 2-way splitter/combiners and/or DCs and triple DCs) or three dual-width modules (16-way splitter/combiners)
- Includes cable management bar (see illustration)
- Modules push and lock into chassis; no mounting hardware necessary

Active Version

- Rugged 3RU design
- Can accommodate both active and passive module types up to 24 single-width passive modules (4, 6, 8, dual 4-way, triple 2-way splitter/combiners and/or DCs and triple DCs) or 12 dual-width modules (16-way splitter/combiners, amplifiers, power supplies and RF detector A/B switch)
- Variety of cable and fiber management options (see illustrations)



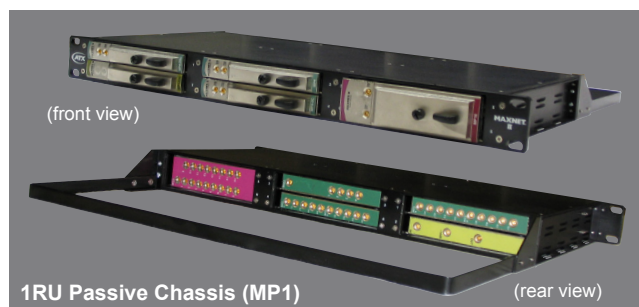
3RU Active Chassis
(front view)

**D3.1/CCAP™
Compliant**

1.2 GHz



3RU Passive Chassis
(front view)



1RU Passive Chassis (MP1)

- Modules push and lock into chassis; no mounting hardware necessary
- Chassis can be powered from 110 VAC, 220 VAC or -48 VDC plug-in power supply modules or remotely via the rear access 24 VDC A and B (redundant) terminal block
- Active chassis is provisioned to accommodate set-up, monitoring and control for modules and chassis over the network (HMS compliant (SNMP v2c)) or through a web browser; email alarm notification is also supported



3RU Active Chassis
(front view)



3RU Active Chassis
(rear view)

3RU Chassis

Dimensions:

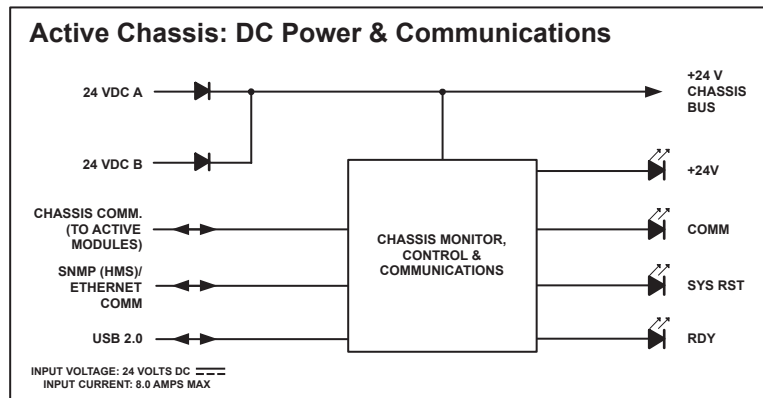
5.25"H x 19.0"W x 14.75"D (13.34H x 48.26W x 37.47D cm)
(without cable management)

Weight:

12.0 lbs (5.44 kg)

Chassis

Active Version (cont'd)



Functional Schematic

Specifications

Active Chassis

ELECTRICAL	
DC INPUT	
INPUT VOLTAGE	24 VDC
INPUT CURRENT (Max)	8 Amps DC
OTHER	
24V POWER INDICATOR	+24V LED
COMMUNICATION STATUS	COMM LED
SYSTEM RESET	SYS RST LED
SYSTEM READY	RDY LED
TERMINAL BLOCK WIRING	# 12 AWG
COMMUNICATIONS INTERFACE	10/100 Base-T
	Web/SNMP (HMS)
USB I/O	Version 2.0
OPERATING TEMPERATURE	0°C to +50°C (+32°F to +122°F)
HUMIDITY	5-95% (without condensation)

NOTE:
Powering can be provided via A/B input on rear terminal block or by plug-in MPAC/MPDC power supplies.

TB#	
1	+24V A
2	COM
3	+24V B
4	COM
5	MON

Terminal Block Assignment

MON	COM	+24V B	COM	+24V A
5	4	3	2	1

View at Terminal Block

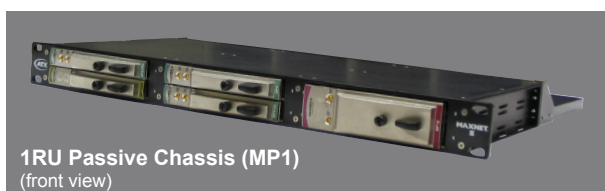
Cable & Fiber Management Options

Passive Chassis Offerings

- MP1 – passive chassis with cable management bar
- MP3B – passive chassis with dual cable management bar
- MP3H – passive chassis with user configurable horizontal channel cable management system
- MP3V – passive chassis with user configurable vertical channel cable management system
- MP3T – passive chassis with large cable management tray
- MP3R – passive reverse chassis
- MPRB – round cable management steel bar
- MPBAR – flat cable management steel bar
- MPLT – large cable management tray (clips included)

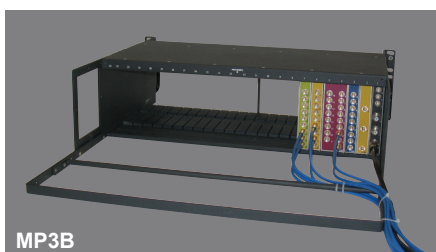
MP1 - Passive Chassis with Cable Management Bar

One cable management bar extends out rear of chassis for cable routing.



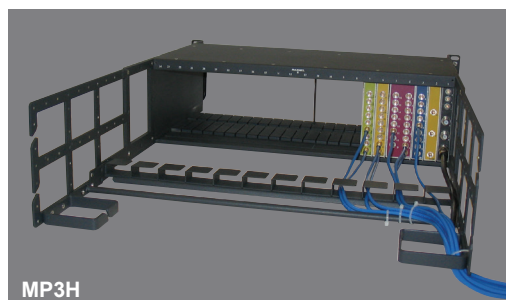
MP3B - Passive Chassis with Dual Cable Management Bar

One large cable management bar extends out rear of chassis for cable routing. A second adjustable bar fits inside larger bar for further routing control.



MP3H - Passive Chassis with User Configurable Horizontal Channel Cable Management System

Cables are routed through horizontal channels attached to extension brackets out rear of chassis. These channels, as well as cable bars and guide squares, are configured by users to suit their individual cable management needs.

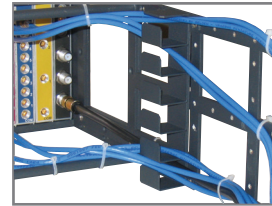
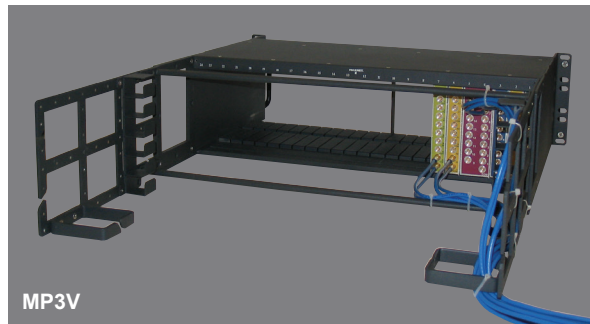


Cable & Fiber Management Options

Passive Chassis Offerings (cont'd)

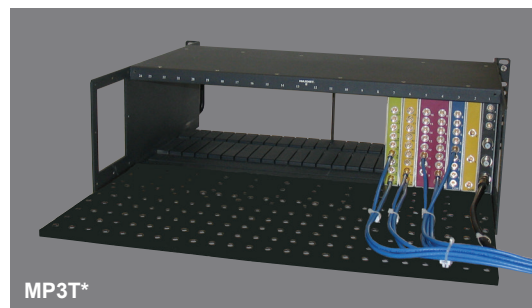
MP3V - Passive Chassis with User Configurable Vertical Channel Cable Management System

Cables are routed through vertical channels attached to extension brackets out rear of chassis. These channels, as well as cable bars and guide squares, are configured by users to suit their individual cable management needs.



MP3T - Passive Chassis with Large Cable Management Tray

Cables are fastened to cable management tray using clips (included) and tie wraps. This tray can also be used for fiber management with the supplied fiber guide clips.



MP3R - Passive Reverse Chassis

Modules are mounted in reverse position.



* MPLT Large Cable Management Tray with included clips is also sold separately

Cable & Fiber Management Options

Active Chassis Offerings

- MP3BA – active chassis with dual cable management bar
- MP3RA – active reverse chassis
- MP3HA – active chassis with user configurable horizontal channel cable management system
- MP3VA – active chassis with user configurable vertical channel cable management system
- MP3TA – active chassis with large cable management tray
- MPRB – round cable management steel bar
- MPBAR – flat cable management steel bar
- MPLT – large cable management tray (clips included)

MP3BA - Active Chassis with Dual Cable Management Bar

One large cable management bar extends out rear of chassis for cable routing. A second adjustable bar fits inside larger bar for further routing control.



MP3RA - Active Reverse Chassis

Modules are mounted in reverse position.



Alternate cable management versions available are (currently not shown):

MP3HA – active chassis with user configurable horizontal channel cable management system (see MP3H)

MP3VA – active chassis with user configurable vertical channel cable management system (see MP3V)

MP3TA – active chassis with large cable management tray (see MP3T)

Cable & Fiber Management Options

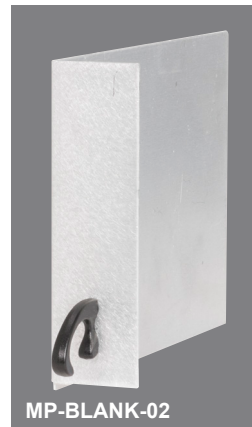
MP-BLANK-19 / MP-BLANK-19R - Blank Rack Panels (Flat/Recessed)

Blank rack panels available in flat or recessed versions.



MP-BLANK-01 / MP-BLANK-02 - Blank Modules (Single-width/Dual-width)

Blank modules available in single or dual-width versions.



Specifications

Chassis

PHYSICAL		
MP1	DIMENSIONS	1RU: 1.75"H x 19.0"W x 15.5"D (4.45H x 48.26W x 39.4D cm)
	WEIGHT	7.54 lbs (1.55 kg)
MP3B	DIMENSIONS	3RU: 5.25"H x 19.0W" x 21.5"D (13.34H x 48.26W x 54.6D cm)
	WEIGHT	12.56 lbs (5.7 kg)
MP3H	DIMENSIONS	3RU: 5.25"H x 19.0W" x 24.5"D (13.34H x 48.26W x 62.2D cm)
	WEIGHT	15.0 lbs (6.8 kg)
MP3V	DIMENSIONS	3RU: 5.25"H x 19.0W" x 24.5"D (13.34H x 48.26W x 62.2D cm)
	WEIGHT	14.6 lbs (6.65 kg)
MP3T	DIMENSIONS	3RU: 5.25"H x 19.0W" x 21.5"D (13.34H x 48.26W x 54.6D cm)
	WEIGHT	13.75 lbs (6.24 kg)
MP3R	DIMENSIONS	3RU: 5.25"H x 19.0W" x 9.5"D (13.34H x 48.26W x 24.1D cm)
	WEIGHT	10.15 lbs (4.6 kg)
MP3BA	DIMENSIONS	3RU: 5.25"H x 19.0W" x 21.5"D (13.34H x 48.26W x 54.6D cm)
	WEIGHT	12.8 lbs (5.8 kg)
MP3RA	DIMENSIONS	3RU: 5.25"H x 19.0W" x 9.5"D (13.34H x 48.26W x 24.1D cm)
	WEIGHT	10.6 lbs (4.8 kg)
MP3HA	DIMENSIONS	3RU: 5.25"H x 19.0W" x 24.5"D (13.34H x 48.26W x 62.2D cm)
	WEIGHT	15.4 lbs (7.0 kg)
MP3VA	DIMENSIONS	3RU: 5.25"H x 19.0W" x 24.5"D (13.34H x 48.26W x 62.2D cm)
	WEIGHT	15.0 lbs (6.8 kg)
MP3TA	DIMENSIONS	3RU: 5.25"H x 19.0W" x 21.5"D (13.34H x 48.26W x 54.6D cm)
	WEIGHT	14.2 lbs (6.5 kg)

Cable & Fiber Management Options

Ordering Information

Part Number	Description
MP1	1RU Passive Chassis with Cable Management Bar
MP3B	3RU Passive Chassis with Dual Cable Management Cable Bars
MP3H	3RU Passive Chassis with Configurable Horizontal Channel Cable Management
MP3V	3RU Passive Chassis with Configurable Vertical Channel Cable Management
MP3T	3RU Passive Chassis with Large Cable Management Tray
MP3R	3RU Passive Reverse Chassis
MP3BA	3RU Active Chassis with Dual Cable Management Cable Bars
MP3RA	3RU Active Reverse Chassis
MP3HA	3RU Active Chassis with Configurable Horizontal Channel Cable Management
MP3VA	3RU Active Chassis with Configurable Vertical Channel Cable Management
MP3TA	3RU Active Chassis with Large Cable Management Tray
MPRB	Round Cable Management Steel Bar
MPBAR	Flat Cable Management Steel Bar
MPLT	Large Cable Management Tray (includes clips)
MP3A-COM	Replacement Communication Module for Dual-width Active Chassis
MP3BAS-COM	Replacement Communication Module for Single-width Active Chassis
MPHKIT	Configurable Horizontal Channel Cable Management Kit
MP-BLANK-19	19", 1RU, Blank Rack Panel, Flat
MP-BLANK-19R	19", 1RU, Blank Rack Panel, Recessed
MP-BLANK-01	Single-width Blank Module for all MAXNET® II Chassis Versions
MP-BLANK-02	Dual-width Blank Module for all MAXNET II Chassis Versions

MAXNET® II is a registered trademark of ATX in the United States and/or other countries. Products or features contained herein may be covered by one or more U.S. or foreign patents. Other non-ATX product and company names mentioned in this data sheet are the property of their respective companies.

© 2019 by ATX Networks Corp. and its affiliates (collectively "ATX Networks Corp."). All rights reserved. This material may not be published, broadcast, rewritten, or redistributed. Information in this document is subject to change without notice.
Rev. 10/19 (ANW0614)



ATX Networks

Tel: 289.204.7800 | Toll-Free: 866.YOUR.ATX | support@atx.com