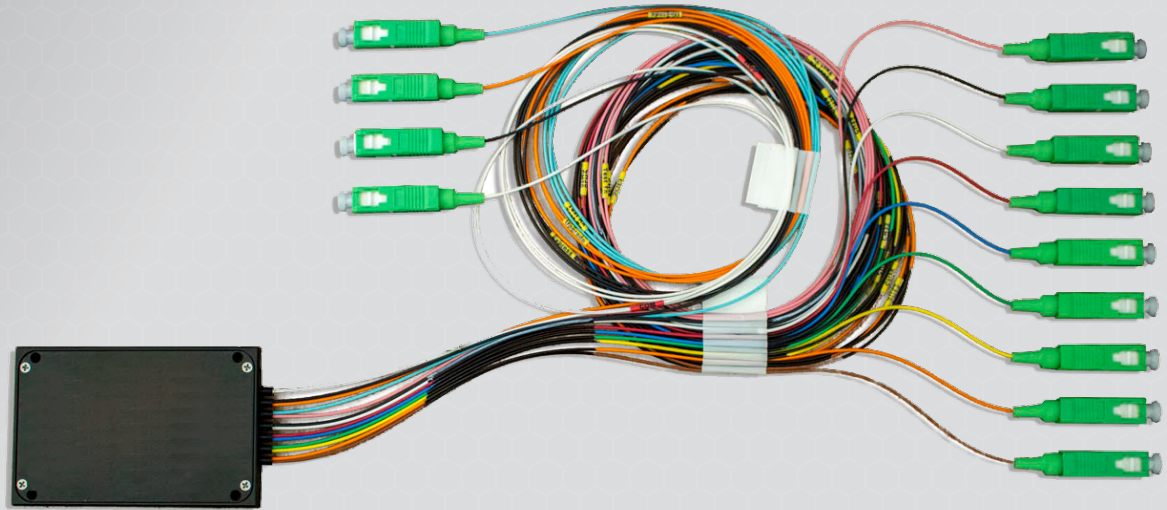




# DIGICOMM DWDM OPTICAL MULTIPLEXER/DEMULTIPLEXER (FIELD CASSETTE)

## 4, 8, 16, 20, AND 40-CHANNEL



## FEATURES

- Cassette style for mounting in FOSC enclosures
- 100 GHz DWDM Channel Spacing (ITU-T G694.1)
- ITU Channels 20-62
- Supports the channel plans of major optical-transport manufacturers
- 0.900mm pigtailed
- SC/APC connectors
- Low-Insertion Loss
- High-Isolation
- High-Directivity
- Extensive Inventory IN-STOCK at our Distribution Center in Englewood, CO

## OVERVIEW

Digicomm's family of DWDM Optical Passives are designed to maximize the capacity of existing fiber optic networks, which greatly reduces the need to construct new fiber optic plant. Available in 4, 8, 16, 20, and 40 channel options, Digicomm's DWDM Optical Passives provide flexibility, along with industry leading specifications. Digicomm's DWDM Optical Passives use the standard ITU channel plan (ITU-T G694.1), support 100GHz channel spacing, and operate between ITU channels 20 and 62. All of Digicomm's Outside Plant (OSP) Optical Passives are cassette-style with SC/APC connectors and come with 1M-long, 0.900mm pigtailed. They can be mounted inside a standard Fiber Optic Splice Case. Digicomm's DWDM Optical Passives also include an Expansion Port, providing the ability to scale the network in the future, as well as Test Ports to assist with network troubleshooting.

## SPECIFICATIONS

OPTICAL	4 CH	8 CH	16 CH	20 CH	40 CH
Ch XX to COM Insertion Loss $\leq$ dB	1.5	2.4	3	3.5	3.5
COM to TP Insertion Loss $\leq$ dB	21	21	21	21	21
EXP to COM Insertion Loss $\leq$ dB	1.5	1.5	1.5	1.5	1.5
UPG to COM Insertion Loss $\leq$ dB	1.8	3	4	5	5
Optical Return Loss $\geq$ dB	45	45	45	45	40
Polarization Dependent Loss, max $\leq$ dB	0.2	0.2	0.2	0.2	0.5
MUX/DEMUX Wavelength Deviation $\pm$ pm	0.05	0.05	0.05	0.05	0.05
FWHM Bandwidth @.dB $\geq$ pm	0.22	0.22	0.22	0.22	0.22
TPK/Uniformity $\leq$ dB	0.4	0.4	0.4	0.4	1.2
Ripple $\leq$ dB	0.4	0.4	0.5	0.5	0.5
Adjacent Channel Isolation $\geq$ dB	30	30	30	30	27
Non-Adjacent Channel Isolation, min $\geq$ dB	40	40	40	40	30
Filter Technology	TFF	TFF	TFF	TFF	AWG

PHYSICAL	4 CH	8 CH	16 CH	20 CH	40 CH
Dimensions (cm.)	10 x 8 x 1	10 x 8 x 1	12 x 8 x 1	12 x 8 x 1	12 x 7 x 1.23
Dimensions (in.)	3.9 x 3.15 x 0.4	3.9 x 3.15 x 0.4	4.7 x 3.15 x 0.7	4.7 x 3.15 x 0.7	4.7 x 2.8 x 0.48

ENVIRONMENTAL	4 CH	8 CH	16 CH	20 CH	40 CH
Storage Temperature	-40° C to 85° C	-40° C to 85° C	-40° C to 85° C	-40° C to 85° C	-40° C to 85° C
Operating Temperature	-40° C to 65° C	-40° C to 65° C	-40° C to 65° C	-40° C to 65° C	-40° C to 65° C

## ORDERING INFORMATION FOR DWDM FIELD CASSETTES WITH SC/APC CONNECTORS

CH	PART NUMBER	DESCRIPTION
4	FOMD-DWDM-FIELD-4-2023-SA	MUX, DWDM 4CH 20-23 Field Cassette, COM, UPG, EXP, DTP
4	FOMD-DWDM-FIELD-4-2427-SA	MUX, DWDM 4CH 24-27 Field Cassette, COM, UPG, EXP, DTP
4	FOMD-DWDM-FIELD-4-2831-SA	MUX, DWDM 4CH 28-31 Field Cassette, COM, UPG, EXP, DTP
4	FOMD-DWDM-FIELD-4-3235-SA	MUX, DWDM 4CH 32-35 Field Cassette, COM, UPG, EXP, DTP
4	FOMD-DWDM-FIELD-4-3639-SA	MUX, DWDM 4CH 36-39 Field Cassette, COM, UPG, EXP, DTP
4	FOMD-DWDM-FIELD-4-4043-SA	MUX, DWDM 4CH 40-43 Field Cassette, COM, UPG, EXP, DTP
4	FOMD-DWDM-FIELD-4-4447-SA	MUX, DWDM 4CH 44-47 Field Cassette, COM, UPG, EXP, DTP
4	FOMD-DWDM-FIELD-4-4851-SA	MUX, DWDM 4CH 48-51 Field Cassette, COM, UPG, EXP, DTP
4	FOMD-DWDM-FIELD-4-5255-SA	MUX, DWDM 4CH 52-55 Field Cassette, COM, UPG, EXP, DTP
4	FOMD-DWDM-FIELD-4-5659-SA	MUX, DWDM 4CH 56-59 Field Cassette, COM, UPG, EXP, DTP
4	FOMD-DWDM-FIELD-4-2157-SA	MUX, DWDM 4CH 21,33,44,57 Field Cassette, COM, UPG, EXP, DTP
4	FOMD-DWDM-FIELD-4-2126-SA	MUX, DWDM 4CH 21,22,24,26 Field Cassette, COM, UPG, EXP, DTP
4	FOMD-DWDM-FIELD-4-2839-SA	MUX, DWDM 4CH 28,33,36,39 Field Cassette, COM, UPG, EXP, DTP
4	FOMD-DWDM-FIELD-4-4454-SA	MUX, DWDM 4CH 44,48,52,54 Field Cassette, COM, UPG, EXP, DTP
4	FOMD-DWDM-FIELD-4-5762-SA	MUX, DWDM 4CH 57,60,61,62 Field Cassette, COM, UPG, EXP, DTP
8	FOMD-DWDM-FIELD-8-2027-SA	MUX, DWDM 8CH 20-27 Field Cassette, COM, UPG, EXP, DTP
8	FOMD-DWDM-FIELD-8-2835-SA	MUX, DWDM 8CH 28-35 Field Cassette, COM, UPG, EXP, DTP
8	FOMD-DWDM-FIELD-8-3643-SA	MUX, DWDM 8CH 36-43 Field Cassette, COM, UPG, EXP, DTP
8	FOMD-DWDM-FIELD-8-4451-SA	MUX, DWDM 8CH 44-51 Field Cassette, COM, UPG, EXP, DTP
8	FOMD-DWDM-FIELD-8-5259-SA	MUX, DWDM 8CH 52-59 Field Cassette, COM, UPG, EXP, DTP
8	FOMD-DWDM-FIELD-8-2162-SA	MUX, DWDM 8CH 21,28,33,39,44,52,57,62 Field Cassette, COM, UPG, EXP, DTP
8	FOMD-DWDM-FIELD-8-2139-SA	MUX, DWDM 8CH 21,22,24,26,28,33,36,39 Field Cassette, COM, UPG, EXP, DTP
8	FOMD-DWDM-FIELD-8-4462-SA	MUX, DWDM 8CH 44,48,52,54,57,60,61,62 Field Cassette, COM, UPG, EXP, DTP
16	FOMD-DWDM-FIELD-16-2035-SA	MUX, DWDM 16CH 20-35 Field Cassette, COM, UPG, EXP, DTP
16	FOMD-DWDM-FIELD-16-3651-SA	MUX, DWDM 16CH 36-51 Field Cassette, COM, UPG, EXP, DTP
16	FOMD-DWDM-FIELD-16-2162-SA	MUX, DWDM 16CH 21,22,24,26,28,33,36,39,44,48,52,54,57,60,61,62 Field Cassette, COM, UPG, EXP, DTP
16	FOMD-DWDM-FIELD-16-2059-SA	MUX, DWDM 16CH 20,21,24,29,35,42,52,54,23,33,44,47,51,57,58,59 Field Cassette, COM, UPG, EXP, DTP
20	FOMD-DWDM-FIELD-20-2039-SA	MUX, DWDM 20CH 20-39 Field Cassette, COM, UPG, EXP, DTP
20	FOMD-DWDM-FIELD-20-4059-SA	MUX, DWDM 20CH 40-59 Field Cassette COM, UPG, EXP, DTP
40	FOMD-DWDM-FIELD-40-2059-SA	MUX, DWDM 40CH 20-59 Field Cassette COM, UPG, EXP, DTP



## ORDERING INFORMATION FOR iWDM FIELD CASSETTES WITH SC/APC CONNECTORS

### 1M PIGTAILS

CH	PART NUMBER	DESCRIPTION
4	FOMD-DWDM-FIELD-4-2126-SA	MUX, DWDM 4CH 21,22,24,26 Field Cassette, COM, UPG, EXP, DTP
4	FOMD-DWDM-FIELD-4-2839-SA	MUX, DWDM 4CH 28,33,36,39 Field Cassette, COM, UPG, EXP, DTP
4	FOMD-DWDM-FIELD-4-4454-SA	MUX, DWDM 4CH 44,48,52,54 Field Cassette, COM, UPG, EXP, DTP
4	FOMD-DWDM-FIELD-4-5762-SA	MUX, DWDM 4CH 57,60,61,62 Field Cassette, COM, UPG, EXP, DTP
8	FOMD-DWDM-FIELD-8-2139-SA	MUX, DWDM 8CH 21,22,24,26,28,33,36,39 Field Cassette, COM, UPG, EXP, DTP
8	FOMD-DWDM-FIELD-8-4462-SA	MUX, DWDM 8CH 44,48,52,54,57,60,61,62 Field Cassette, COM, UPG, EXP, DTP

### 3M PIGTAILS

CH	PART NUMBER	DESCRIPTION
4	FOMD-DWDM-FIELD-4-2126-SA-3	MUX, DWDM 4CH 21,22,24,26 Field Cassette, COM, UPG, EXP, DTP
4	FOMD-DWDM-FIELD-4-2839-SA-3	MUX, DWDM 4CH 28,33,36,39 Field Cassette, COM, UPG, EXP, DTP
4	FOMD-DWDM-FIELD-4-4454-SA-3	MUX, DWDM 4CH 44,48,52,54 Field Cassette, COM, UPG, EXP, DTP
4	FOMD-DWDM-FIELD-4-5762-SA-3	MUX, DWDM 4CH 57,60,61,62 Field Cassette, COM, UPG, EXP, DTP
8	FOMD-DWDM-FIELD-8-2139-SA-3	MUX, DWDM 8CH 21,22,24,26,28,33,36,39 Field Cassette, COM, UPG, EXP, DTP
8	FOMD-DWDM-FIELD-8-4462-SA-3	MUX, DWDM 8CH 44,48,52,54,57,60,61,62 Field Cassette, COM, UPG, EXP, DTP