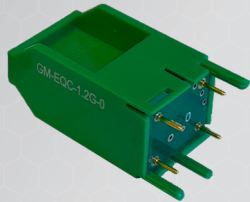


DIGICOMM INTERNATIONAL® GAINMAKER® 1.2 GHz FORWARD CABLE EQUALIZER



Forward cable equalizers are used during station balancing to compensate the tilt produced by coaxial cable in order to achieve the desired flatness.

EQUALIZER SPECIFICATIONS

1.2 GHz from 0 dB through 30 dB

Digicomm Part Number	EQ (dB) Value	FREQUENCY (MHz) VERSUS INSERTION LOSS (dB)								
		52 MHz	86 MHz	550 MHz	600 MHz	650 MHz	750 MHz	870 MHz	1002 MHz	1218 MHz
GM-EQC-1.2G-0=	0.0	0.0	0.0	0.0	0.0	0.0	0.0	0.0	0.0	0.0
GM-EQC-1.2G-1.5=	1.5	2.0	1.9	1.5	1.3	1.3	1.2	1.1	1.0	0.9
GM-EQC-1.2G-3=	3.0	3.1	2.8	2.0	1.7	1.5	1.3	1.1	0.9	0.6
GM-EQC-1.2G-4.5=	4.5	4.7	4.4	2.8	2.5	2.3	1.9	1.6	1.2	0.7
GM-EQC-1.2G-6=	6.0	5.9	5.5	3.6	3.1	2.7	2.3	1.8	1.3	0.7
GM-EQC-1.2G-7.5=	7.5	7.1	6.7	4.2	3.7	3.2	2.7	2.2	1.6	0.7
GM-EQC-1.2G-9=	9.0	8.2	7.7	4.8	4.2	3.6	3.1	2.5	1.7	0.7
GM-EQC-1.2G-10.5=	10.5	9.6	9.0	5.5	4.7	4.1	3.4	2.7	1.9	0.7
GM-EQC-1.2G-12=	12.0	10.8	10.1	6.1	5.3	4.5	3.8	2.9	2.0	0.7
GM-EQC-1.2G-13.5=	13.5	12.1	11.4	6.9	5.9	5.0	4.1	3.1	2.1	0.7
GM-EQC-1.2G-15=	15.0	13.1	12.4	7.5	6.5	5.5	4.6	3.5	2.3	0.8
GM-EQC-1.2G-16.5=	16.5	14.4	13.6	8.0	6.9	6.0	5.0	3.9	5.2	53.8
GM-EQC-1.2G-18=	18.0	15.3	14.4	8.4	7.2	6.0	4.9	3.6	2.4	0.6
GM-EQC-1.2G-19.5=	19.5	20.4	20.0	13.5	11.9	10.3	8.6	6.7	4.4	0.7
GM-EQC-1.2G-21=	21.0	18.0	16.9	9.9	8.5	7.1	5.9	4.5	3.0	0.8
GM-EQC-1.2G-22.5=	22.5	23.4	23.1	15.7	13.6	11.7	9.7	7.5	5.0	1.0
GM-EQC-1.2G-24=	24.0	20.5	19.2	11.2	9.6	8.1	6.8	5.1	3.4	1.0
GM-EQC-1.2G-25.5=	25.5	22.1	20.7	12.3	10.6	9.0	7.5	5.8	3.9	1.3
GM-EQC-1.2G-27=	27.0	23.4	21.9	12.9	11.1	9.4	7.8	6.0	4.1	1.3
GM-EQC-1.2G-28.5=	28.5	24.7	23.1	13.5	11.6	9.9	8.2	6.3	4.3	1.3
GM-EQC-1.2G-30=	30.0	25.9	24.2	14.2	12.2	10.3	8.5	6.5	4.4	1.3