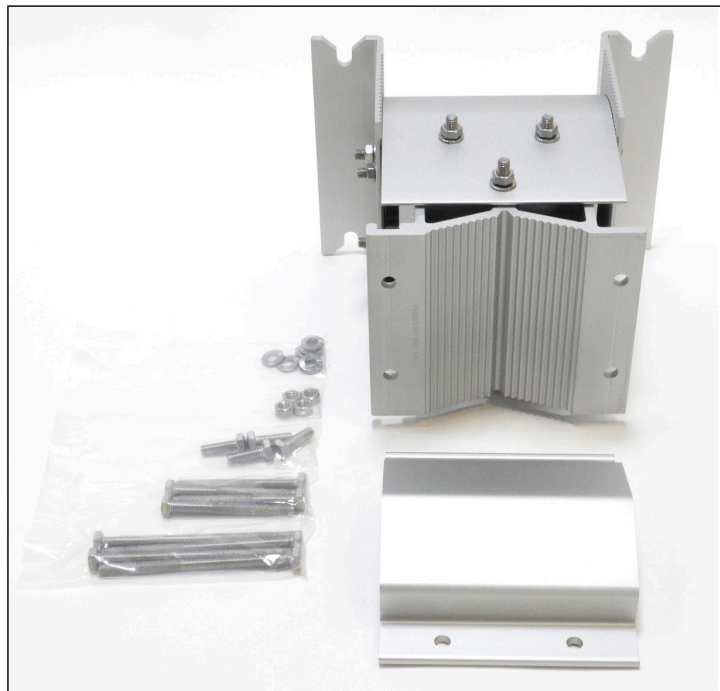


POLE MOUNTING KITS FOR THE G1 BN



Safely and reliably secure the Tarana G1 base node (BN) with a specially made pole mount. Installation is simple and straightforward, providing support for maximum stability.



Description	Pole mounting kit for the G1 BN (base node)
Tarana Product SKU	34-0028-001
Manufacturer	Belton Technology
Fitment	Fits poles 2.5–4.5 in (64–114 mm) in diameter
Material	6061 aluminum billet
Coating	Anodized
Adjustments	$\pm 30^\circ$ azimuth, $\pm 20^\circ$ elevation
Dimensions	184 mm (H) x 255 mm (W) x 265 mm (D)
Weight	12 lbs (5.4 kg)
Contents	Pole mount, bracket, (8) washers (M8), (4) screws (M8-1.25 x 25 mm), (4) nuts (M8-1.25 mm), (4) screws (M8-1.25 x 80 mm), (4) screws (M8-1.25 x 120 mm)