

In this newsletter  
read about

- CRS804-4DDQ-hRM with accessories
- R11e-LTE7
- Chateau LTE7
- LtAP LTE7 kit
- SXT LTE7 kit
- Chateau LTE7 ax
- Networking upgrade
- Fox-proof networking
- RouterOS 7.20.7
- New video

## CRS804 DDQ

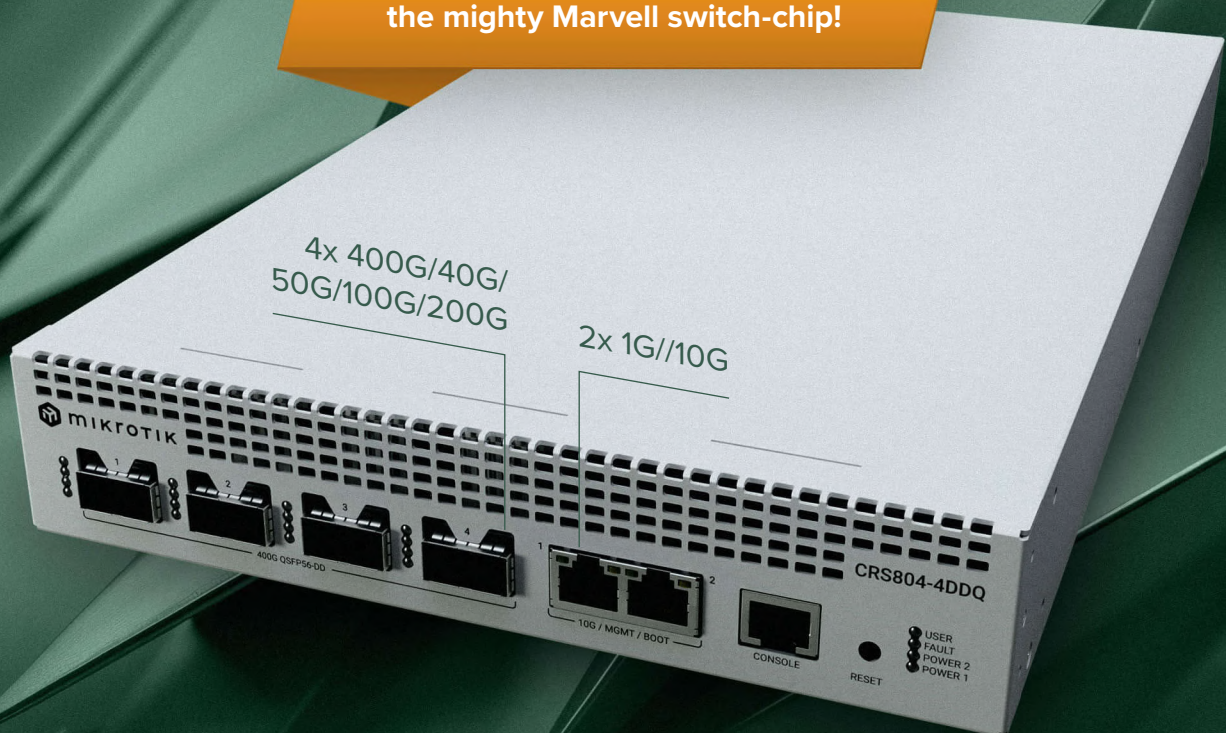
\$ 1,295

PDF



Compact 400G switching for AI clusters, storage fabrics, and lightning fast aggregation – for the best price on the ultra high-speed market.

Reach wire-speed on all ports with  
the mighty Marvell switch-chip!



*CRS804 DDQ is the practical and cost-effective approach to  
400 Gigabit speeds, AI, and future-proofing.*



4 GB of RAM



Quad-core  
2 GHz ARM CPU



Dual-redundant  
hot-swap power  
supplies



2x hot-swap  
cooling fans



RouterOS v7

The CRS804 DDQ is a compact and reliable **400 Gigabit switch** designed for **modern AI workloads** and next-generation network upgrades. With **four 400G QSFP-DD** ports and dual 1/10G Ethernet, it delivers exceptional bandwidth density in a quiet and efficient 1U form factor.

Inside, a Marvell 98DX7335 switch chip works together with a hefty quad-core 2.0 GHz ARM CPU, 4 GB of DDR4 RAM, and RouterOS v7. This provides advanced traffic control, high performance switching, and a familiar management environment trusted by users worldwide.

The CRS804 DDQ is designed for long-term reliability and low cost of ownership, supported by hot-swap power supplies (included!), robust cooling, and low power consumption that reaches only 123 W at full load with optics installed.



Check out our YouTube and TikTube videos for this product!



## Where does it fit

### AI and GPU clusters

A perfect building block for small to medium AI installations. It delivers predictable, low-latency performance and full wire-speed switching, keeping GPU nodes and storage traffic flowing without bottlenecks. The compact design and low power usage make it suitable for AI labs, research environments, and smaller rack deployments.

### All-flash storage fabrics

Use native 400G ports for fast storage uplinks or split them into dual 200G links. Ideal for media production, scientific workloads, and any environment where rapid data movement is essential.

### Future proofing for existing networks

The CRS804 DDQ can act as a high speed core or aggregation switch even in older racks. Each 400G QSFP-DD port is built from eight independent data lanes. This enables flexible breakout options, including two 200G links for AI workloads or lower-speed connections such as 100G or 40G. You can deploy the CRS804 DDQ in your existing network today and upgrade to higher speeds over time without replacing the switch. With the right breakout cables, the CRS804 DDQ can interconnect virtually any device with SFP or QSFP ports, regardless of generation.

### Compact 400G fabrics in limited rack space

Create a powerful spine or backbone fabric using four 400G ports. Perfect for small datacenters, enterprise pods, edge compute installations, and environments where traditional 400G equipment would be too loud, too large, or too expensive.



## CRS804 interface speed support:

**2x**  
**1G/10G**  
**Ethernet ports**



**4x**  
**40G/50G/100G/200G/**  
**400G QSFP-DD ports \***

*\* QSFP-DD ports also support break-out modes to 1G/2.5G/5G/10G/25G/50G*



We have included the RMK-2x10/19 accessory, so you can mount two CRS804 switches in a single 1U slot of a standard 19-inch rack.



## CRS804 replacement parts

Alongside CRS80, we're introducing a set of hot-swap replacement parts.

### G1382-0350WNA

- 48V DC telecom\_IN
- hot-swap power supply



\$ 139

PDF



### G1394-0350WNA

a hot-swap 12VDC 27.5A 350W,  
the same PSU that the CRS804  
features by default



\$ 119

PDF



### MT-HotSwapFan-V2

a hot-swap cooling fan



\$ 29

PDF



# CAT6 becomes CAT7 – and with a better price!

## Faster. Smarter. More Affordable.

Your favorite MikroTik LTE products just got a major upgrade. Same reliability, same design – but now with LTE Category 7 speed, expanded frequency support, and lower prices across the board.

LtAP LTE7 kit / R11e-LTE7 / SXT LTE7 kit / Chateau LTE7



## Why Upgrade to CAT7

- ✓ Twice the upload speed\*
- ✓ Expanded frequency support – now includes Band 32 (1500 MHz) for even better performance in congested areas.
- ✓ Same trusted design – no changes to installation or configuration.
- ✓ Lower cost – better connectivity that actually costs less, especially on volume orders.

*\* Depending on the LTE tower infrastructure and other variables.*

## R11e-LTE7:

quick drop-in upgrade for mobile integrators

\$ 65

PDF



The next-generation **miniPCIe** LTE CAT7 modem for your RouterBOARDS. Drop-in replacement for FG621-EA – now offering **300 Mbps down / 100 Mbps up**, with added **Band 32 & Band 28** support. Perfect for LtAP, RBM33G, or any system with miniPCIe + USB. Compared to the previous FG621 version, this miniPCIe unit has a smaller form-factor, so it should fit better inside more devices. Upgrade your mobile connectivity without changing the whole setup!



## Chateau LTE7:

a stylish home and office LTE powerhouse, EU bestseller

\$ 119

PDF



Our most versatile home router, featuring the new CAT7 modem and a speedy quad-core CPU for all your household network security and management tasks. **Dual-band, dual-chain Wi-Fi, 5x Gigabit ports**, and full RouterOS v7 features – all at a significantly lower price than the previous LTE6 version. Perfect for secure VPN work, home offices, or small business networks that care about both function and aesthetics. Amazing in the hands of seasoned system administrators. Or in a household with zero IT skills. Or anything in-between. Chateau and RouterOS v7 can do it all!



## LtAP LTE7 kit

The iconic heavy-duty automotive router – now twice as fast!

\$ 169

PDF



The new LtAP LTE7 kit takes everything people love about LtAP – the **rugged weatherproof case**, built-in **GPS**, extreme **power flexibility**, and miniPCI-e expansion options... and adds our latest LTE Category 7 modem for a huge real-world improvement! Higher speed, stability and throughput is not the only benefit of the new modem. It comes with expanded frequency support including Band 32 for better performance in congested areas and during roaming.



## SXT LTE7 kit:

reliable connectivity in remote areas

\$ 109

PDF



A **rugged outdoor LTE CPE** with the new R11e-LTE7 modem inside. Delivers stable, fast **Internet where phones fail** – ideal for farms, off-grid connections, and countryside estates. Now with better uplink, **PoE in/out**, and a wide 12–57 V power range. Mount it, connect, and stay online. Faster uploads. Lower latency. Same trusted SXT design that stays hidden in plain sight.





# Chateau LTE7 ax

\$ 169

PDF



Your favorite high-performance home and office LTE router just got a major upgrade. Chateau LTE7 ax keeps the same powerful hardware, sleek design, and Wi-Fi 6 performance – but now features an LTE Category 7 modem, expanded frequency support, and a significantly lower price than the previous LTE6 ax version.



Container support



4x Gigabit Ethernet ports



1 GB of RAM



Supports Band 32 & Band 28!



Powerful 1.8 GHz  
quad-core ARM CPU



Strong dual-band, dual-chain radio for  
maximum coverage



Fast and responsive  
LTE Category 7 modem



2.5 Gigabit  
Ethernet

Are you tired of those suspicious, low-quality default routers from your service providers? So many households are switching to mobile internet, but those default routers can really ruin the experience. That's why we decided to take everything we've learned over the last 20 years of networking excellence and create a single device that will make most households happy: the MikroTik Chateau.



## Why upgrade to CAT7?

- Twice the upload speed (Depending on the LTE tower infrastructure and other variables)
- Expanded frequency support, including Band 28 (700 MHz) & Band 32 (1500 MHz) for better performance in congested areas
- Carrier aggregation (2×CA) for higher efficiency and responsiveness in busy networks
- Same trusted design – no changes to installation or configuration
- Lower cost – better connectivity that actually costs less, especially on volume orders

## A powerful LTE router for demanding networks

Chateau LTE7 ax combines the new R11e-LTE7 modem with a **quad-core ARM CPU**, 1GB of RAM, Wi-Fi 6 (802.11ax) dual-band wireless, and a 2.5 Gigabit Ethernet port for ultra-fast local connections. Run **multiple secure VPN tunnels**, advanced firewall rules, **advanced container setups**, or complex routing scenarios – all while enjoying faster and more reliable mobile connectivity. Whether LTE is your primary connection or a rock-solid backup to fiber, Chateau LTE7 ax adapts to your setup effortlessly... and in style!

## Perfect for home offices, businesses, and ISPs

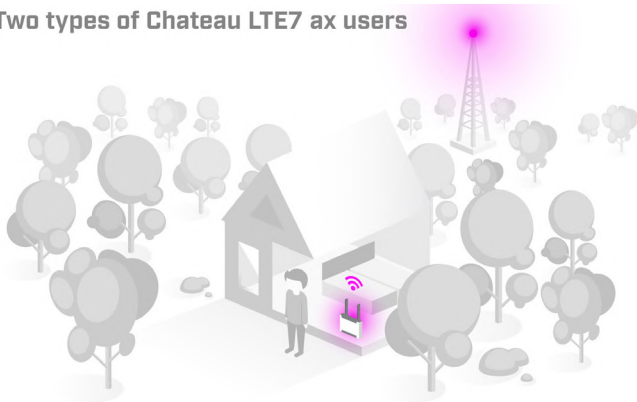
With **five Ethernet ports (including a 2.5G port!)**, **2×2 MIMO LTE** and full **RouterOS v7** functionality, Chateau LTE7 ax fits a wide range of use cases:

- Secure home offices and remote work
- Small and medium-sized businesses
- LTE-based or hybrid ISP deployments
- Households that want performance and clean design

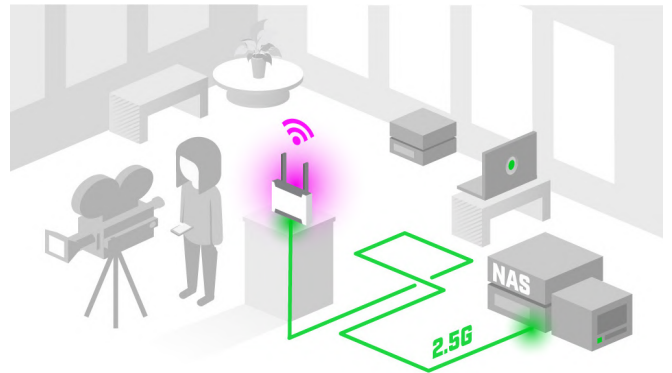
It's equally comfortable in the hands of seasoned system administrators who need true flexibility – or users who just want to plug it in and forget it's there.

Chateau supports the TR-069 technology that allows creating custom remote client management options. You can have the most straightforward and basic router settings on the same web-page that you are using to pay the mobile bill.

### Two types of Chateau LTE7 ax users



Michael travels a lot. He has an ultra-fast ISP connection at home. 2.5 Gigabit Ethernet port is his main connection. He uses the LTE7 modem at his travel destination - instead of a hotspot.



Cynthia is a video editor. She uses the 2.5 Gigabit Ethernet to reach her NAS server with all the large media files. The LTE7 modem is her main connection to the outside world - with all the messengers, online meetings, and the occasional 4K movie streams.

## The freedom of LTE

Reach consistent speeds of up to 300 Mbps with carrier aggregation, as CAT6 allows devices to use multiple bands simultaneously. That is a huge advantage in areas with many LTE users. Chateau provides better responsiveness in a crowded environment and higher efficiency for weaker signal situations in the countryside.

Depending on the service provider, we have seen Internet speed doubling in rural areas after switching to carrier aggregation, so there is no need to wait for cable network expansions.



# From legacy to 100G: modern campus networking upgrade in Bangkok

One of Thailand's most prestigious university-affiliated secondary schools recently completed a major network upgrade in its 17-story academic building – replacing a legacy infrastructure that could no longer keep up with daily demand.

The new design delivers **10–100 Gbps core connectivity** for LAN, VoIP, access points, and CCTV systems – reliably serving **2,000+ users every day**. The entire network, from **core to access**, is built on MikroTik routing and switching, ensuring performance, redundancy, and future scalability while remaining cost-efficient.



*“We needed a network that could scale to thousands of daily users – without enterprise-level costs.”*

The project was implemented by MikroTik partners **NeXTGENiT**, **SIMAT**, and **G-Net**, featuring hardware Layer 3 offloading, link aggregation, and high availability at both hardware and software levels.

## Deployed MikroTik devices include:

- CCR2216-1G-12XS-2XQ
- CRS520-4XS-16XQ-RM
- CRS518-16XS-2XQ-RM
- CRS504-4XQ-IN
- CRS326-24S+2Q+RM
- CRS312-4C+8XG-RM
- CRS354-48P-4S+2Q+RM
- CRS328-24P-4S+RM

The distributor has shared the network topology diagrams, you can find them [HERE](#).



# Fox-proof networking: how 60 GHz wireless keeps a chicken farm safe

When foxes started paying nightly visits to a rural chicken farm, the solution was way more tech than a simple fence.

Using a 60 GHz point-to-point wireless link, two IP cameras, and an end-to-end MikroTik setup, a farmer created a stable, low-latency video surveillance system between the house and a henhouse 50 m away – even with trees in the way. Reliable live monitoring, weather-proof hardware, and peace of mind for both animals and owners – ain't that the dream? Well, with the MikroTik Cube 60 Pro ac this dream is now a reality.

“This project impressively demonstrates that professional network and wireless technology can also be used effectively in small agricultural applications. The combination of MikroTik Cube 60Pro ac, CRS112-8P-4S-IN and PoE IP cameras has created a robust, future-proof system that combines security, animal welfare and suitability for everyday use.”

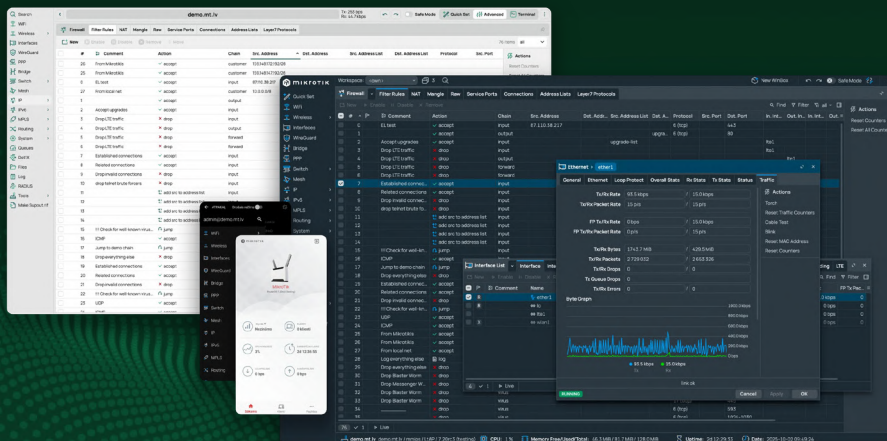
Read the full story on the [VARIA](#) web page.



# Still on v6? RouterOS 7.20.7 long-term release marks the right time to move to v7!

RouterOS 7.20.7 is the first v7 release with long-term status. This means maximum stability and a release intended for production networks where reliability comes first.

After years of development and real-life testing, RouterOS v7 has reached a level where upgrading from v6 is no longer something to be worried about. If you have been staying on v6 out of caution, this is the moment when v7 without a doubt becomes the safe and smart choice.



## How to upgrade

The 7.20.7 release focuses on stability and fixes across routing, switching, wireless, LTE, IPv6, VPN, and various system components.

Before upgrading, remember to:

- create backups and exports and store them externally
- ensure stable power during the upgrade
- check that enough free storage is available

Upgrade via System → Packages → Check For Updates and select the long-term channel, or [download here](#).

For discussion, feedback, and suggestions, join our [forum thread](#).

*Many thanks to everyone involved in bringing RouterOS v7 to long-term stability via feature requests, feedback, trust, and patience!*



Container apps made  
**EASIER THAN EVER!**



[HERE YOU CAN DOWNLOAD ALL THE VISUALS USED IN THIS NEWSLETTER](#)